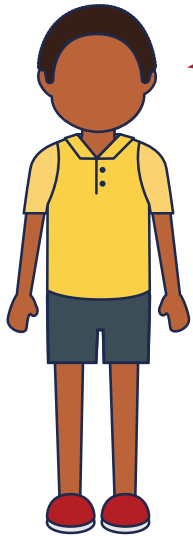


ISouth Africa Coronavirus CivicActs Campaign ithatha amahemuhemu nemibono phakathi kwemiphakathi ukuze kususwe izikhala zemininingwane phakathi kukahulumeni, abezindaba, ama-NGO, amabhizinisi kanye nomphakathi. Ngokuhlinzeka umphakathi ngamaqiniso, lezi zibalo zamakhompiyutha ze-coronavirus zihlose ukudala ukuqonda okungcono kwezidingo eziphathelene ne-coronavirus nokuhlehlisa amahemuhemu ngaphambi kokulimaza okwengeziwe.

Okwakamuva Maqondana NeLockdown

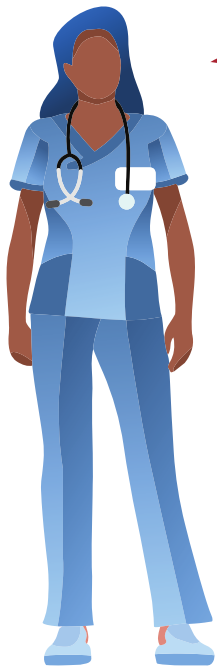
1. Imvaelwakhaya seyilinciphisile izinga lokusabalala kwegciwane, umugqa wegrafu usuyaqonda kancane kanti abantu baseNingizimu Afrika nabo sebesitholile isikhathi.
2. Bangu-28 000 abasebenzi bezokunakekelwa kwezempilo abangena imizi ngemizi emiphakathini esengcupheni, baxilonge futhi bahlole abantu ukubheka ukuthi bakhona yini asebenegciwane.
3. Ukumisa imvaelwakhaya ngendlela engahleiwe kahle kungandisa ukusabalala kwegciwane. Kuzodingeka ukuba kube nendlela ehlelekile yokudambisa izinga lemvaelwakhaya, kubhekwa izimo zezomnotho nezokubaluleka kwezenhlalo.
4. Uhulumeni ucabanga ngokuba kube nemvaelwakhaya engaphelelisiwe nengaphoqiwe kubantu abaneminyaka engaphezu kwengu-60 nakulabo abasengcupheni kuze kube nguMandulo. (uSeptemba).
5. Umnyango wezempilo ulungiselela ukwenyuka kwezinga lwezigameko zeCovid-19 ngokuhlela izibhedlela ezizobhekana nenqwaba yezigameko eziphuthumayo eGoli, eKapa naseThekwini, kanye namawodi ezimo ezibucayi (ama-ICU) ezibhedlela ezinkulu ezifundazweni kanye nokuthenga okokugqoka kokuzivikela okwengeziwe neminye imishini yokuphefumula.

Imibuzo → Amaqiniso



Ngabe zonke iziguli ze-COVID-19 zizodinga imishini yokuphefumula?

Cha. Iziguli eziningi ze-COVID-19 ngeke zidinge ukulashelwa esibhedlela. Kulinganiselwa ekutheni zingama-15% iziguli ze-COVID-19 ezizoba sesimweni esibucayi sesifo esidinga uhlobo oluthile lokwelashwa ngokunikwa umoya we-oksijini kanti ezingama-5% zizogula kakhulu, zidinge imishini yokuphefumula.



Ngabe iNingizimu Afrika inemishini engaphansi kwengu-1000?

Cha. Akukacaci ukuthi mingaki imishini yokuphefumula iNingizimu Afrika enayo. Kulinganiselwa ekutheni ingacishe ibe ingu-6000 ezibhedlela zikahulumeni nezizimele. Yomibili imikhakha kahulumeni nezimele isebenzela ukuhlangabezana nezidingo ezilindelekile.